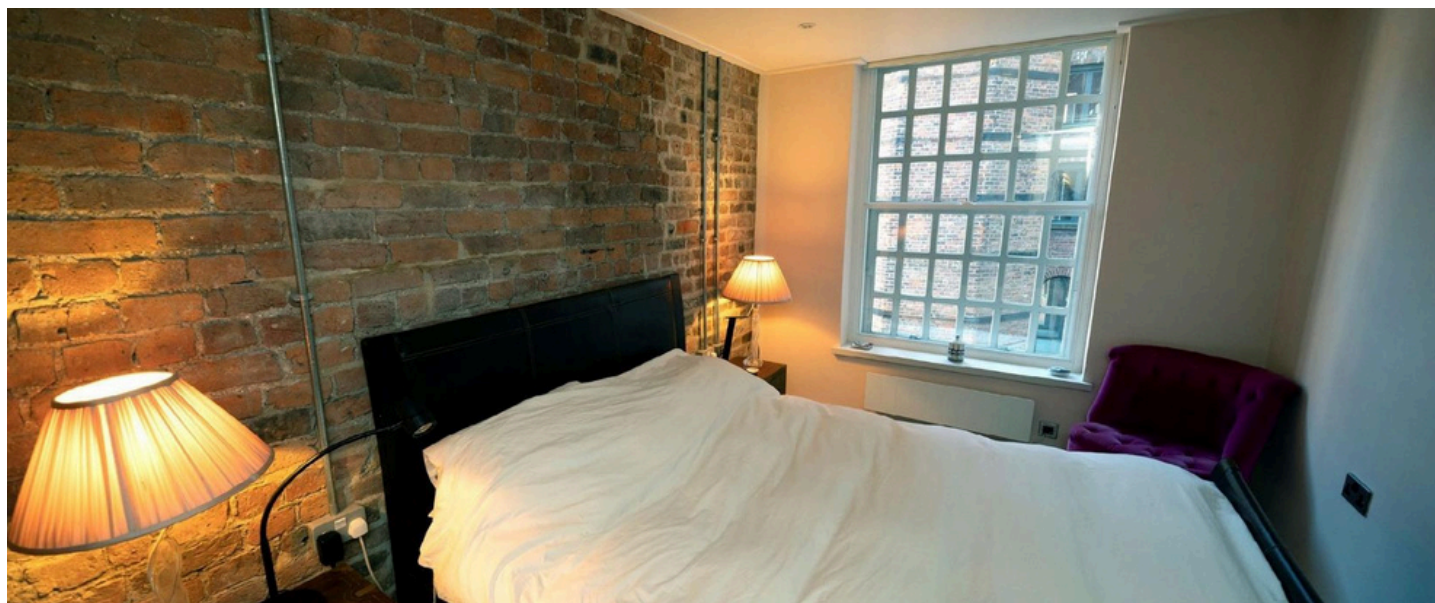


# Operation & Maintenance Manual.

## Tilt-In Balanced Vertical Slider (TBVS).



Discreet units with self-supporting panes. The tilt-in facility enables each secondary sash (panel) to be independently released from the outer frame and pivoted inwards through almost 180°.

### Operating Instructions

Hold the bottom handle section of the unit and push in the button which is located to the centre of the meeting styles. This allows the bottom panel to slide up and the top button to slide down. In order to locate the push button again, the top panel must be pushed right to the top and the bottom panel right to the bottom.

To operate the tilt in facility, press the push button in the centre of the meeting styles and slide the panel up slightly. Using the small sliding catch located to the left and right hand side of the bottom panel, pull the release catches towards the centre and tilt panel towards you. To tilt the top panel, the bottom panel has to be in the tilt in position. Slide the top panel down as far as required and then repeat the operation of pulling the small catch towards the centre then tilt panel towards you.

To return the top panel into a closed position, tilt the panel back towards the window and ensure the catches are locked into the track securely and slide as normal into the original position. Repeat this procedure with the bottom panel. Please note: the stop blocks must not be removed in any circumstance unless by a trained Granada operative, if these are removed by others and without Granada written permission this will invalidate any and all warranties provided.

### Maintenance

Environmental issues will dictate the cleaning cycle, i.e. location, weather, traffic etc. and should consist of washing down the glass and aluminium frames with a non-alkaline detergent in warm water using a soft cloth or a sponge. Avoid abrasive cleaners, steel wool, strong acids or alkalis. After cleaning it is advisable to rinse the surface with clean water and wipe dry.

Chips or scratches in the paint finish can be touched up by using a nitro cellulose lacquer paint, but care must be taken to prevent paint from getting into draught seals or moving parts.

Depending on the location of the window, cleaning and lubrication may be desirable after an extended period. The required maintenance frequency will vary based on site conditions. Applying a few drops of light oil to the spiral rod can help improve longevity and performance.

We recommend implementing a yearly maintenance plan to ensure optimal functionality.

### TBVS

